



STABLE STEEL BUILDING COMPANY LIMITED

Website : <http://ssb.vn>

Email: info@ssb.vn

Tel: (+84) 028 2253 9806

Head Office: 22 An Phu – An Phu Ward – Thu Duc City –HCM City - Vietnam

Factory : Binh Duong province – Viet Nam





CONTENTS

3	I	INTRODUCTION
4	I	WORKING PROCESS
5-7	I	BUILDING STANDARD
8	I	CONSULTATION & DESIGN
9	I	FABRICATION
10	I	ERECTION
11-20	I	SSB PRODUCTS
20-34	I	COMPLETED PROFFECTS



INTRODUCTION

ABOUT US

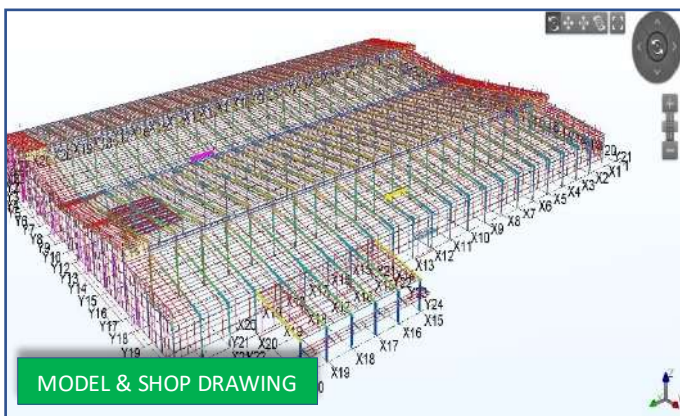
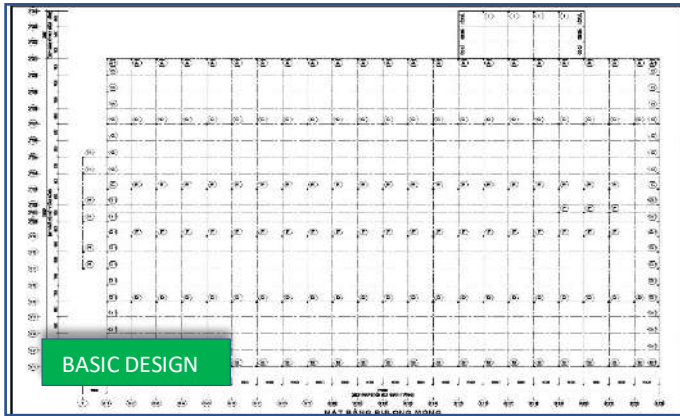
Stable Steel Building Co., Ltd. was established in 2018 in response to the strong development needs of the industrial construction industry as well as the steel structure field. We, an experienced team, are truly dedicated and passionate in the field of Pre-Engineered steel Buildings. Wishing to bring the best product value and the most perfect service to customers

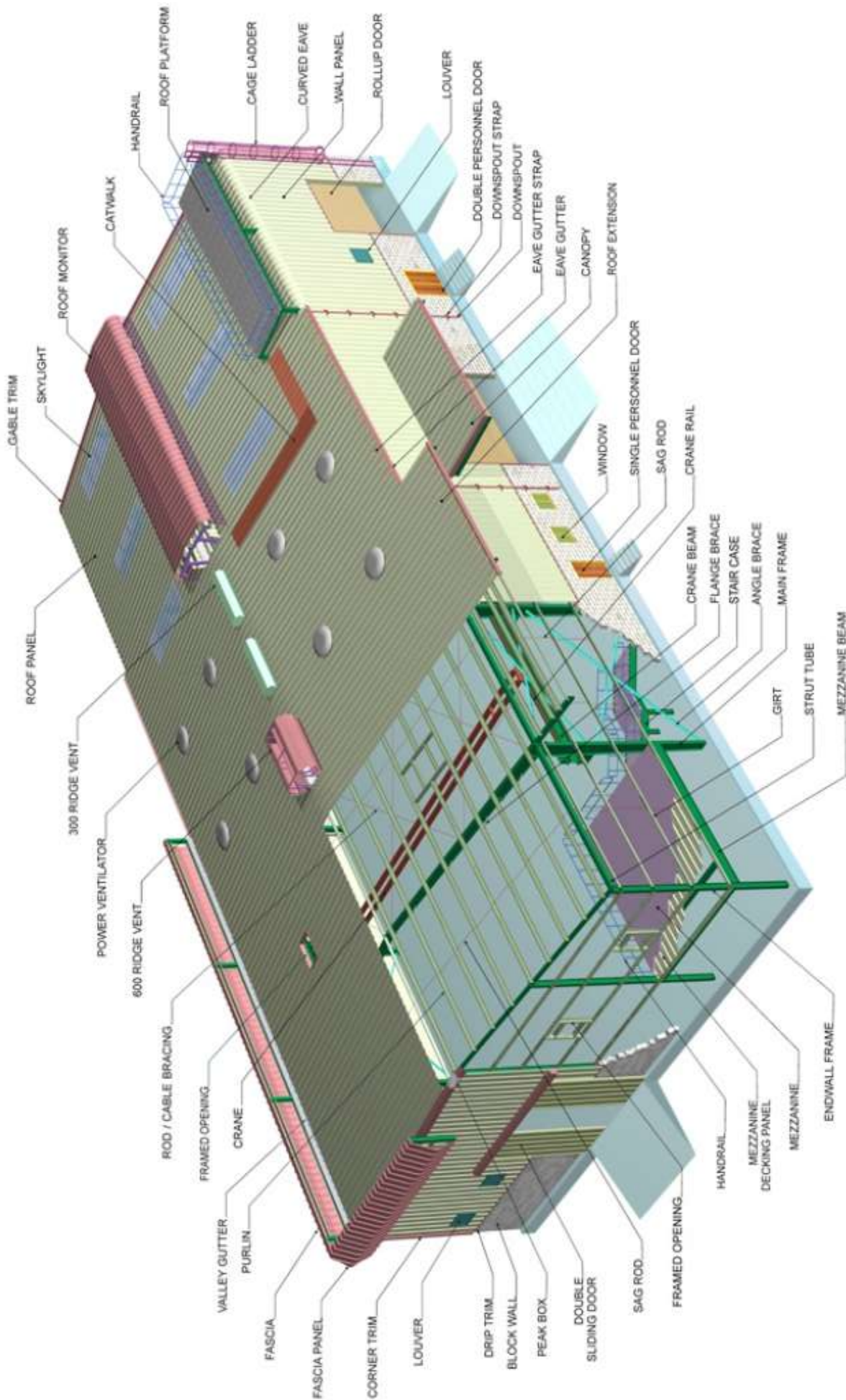
SPECIALIZED

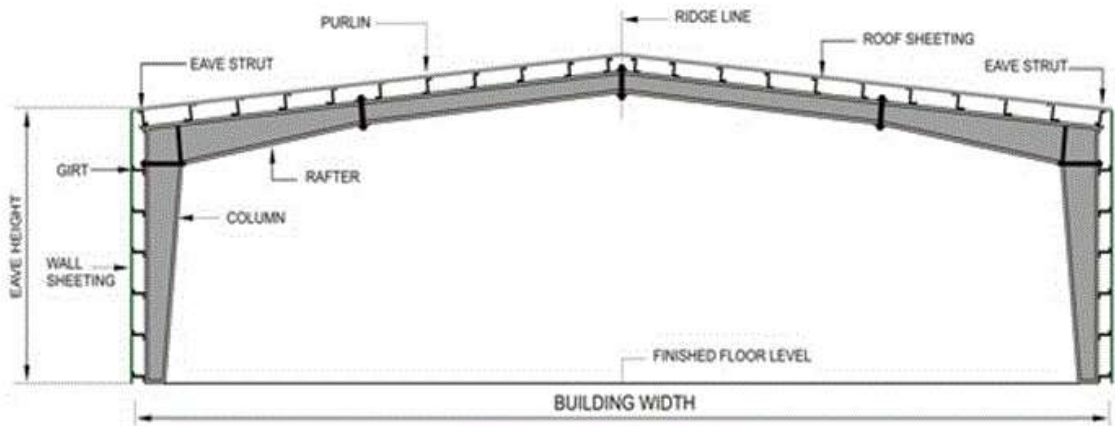
Stable Steel Building specializes in designing, manufacturing and erecting pre-engineered steel buildings for a variety of buildings such as factories, warehouses, galleries, commercial centers, supermarkets, stadiums, hangars ..

OUR VISION

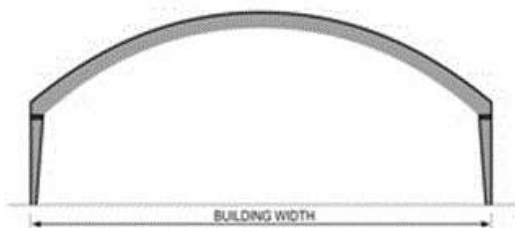
Efforts step by step to affirm the brand in the field of pre-engineered steel buildings. Speaking of SSB is about “The best Schedule- The best Solution- The best Benefit” with products that are reasonably priced, are manufactured entirely according to US technology



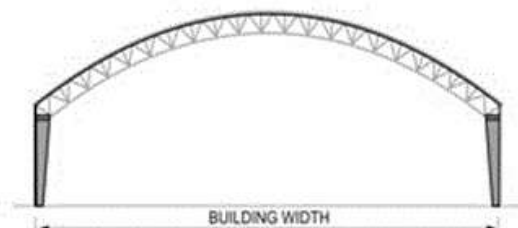




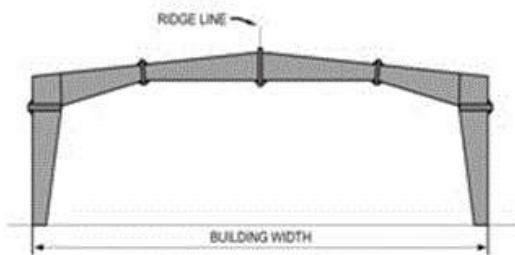
Typical Cross Section



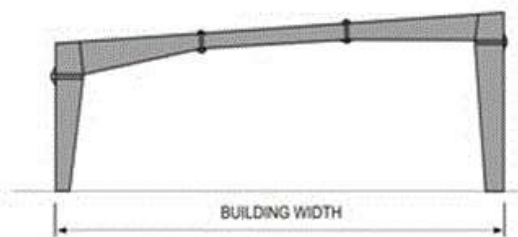
MAX. PRACTICAL WIDTH = 100 m
Built-up Curved Rafter (BU)



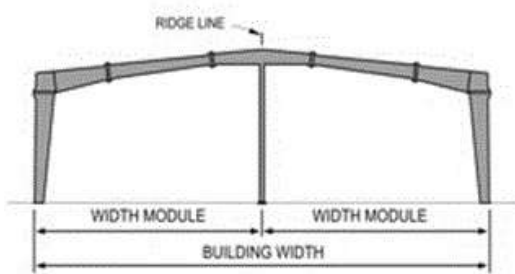
MAX. PRACTICAL WIDTH = 100 m
Open - Web Curved Rafter (OW)



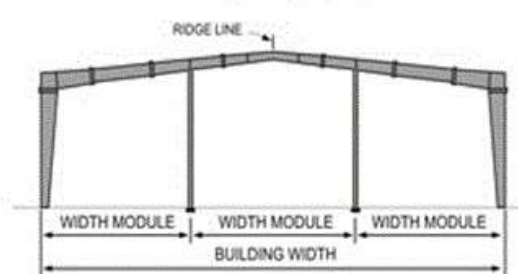
MAX. PRACTICAL WIDTH = 100 m
Clear Span (CS)



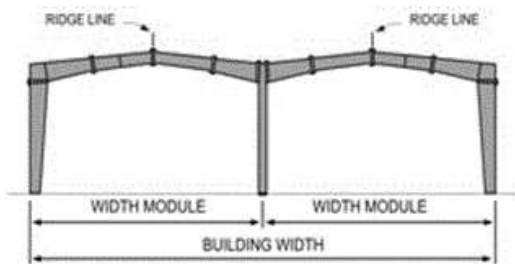
MAX. PRACTICAL WIDTH = 50 m
Single Slope (SS)



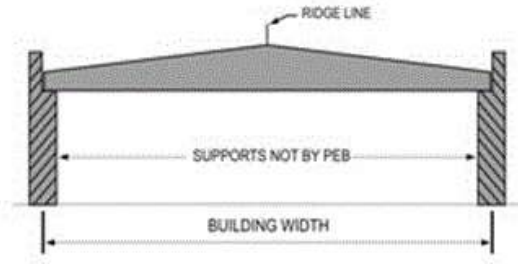
MAX. PRACTICAL WIDTH = 150 m
Multi-Span "1" (MS-1)



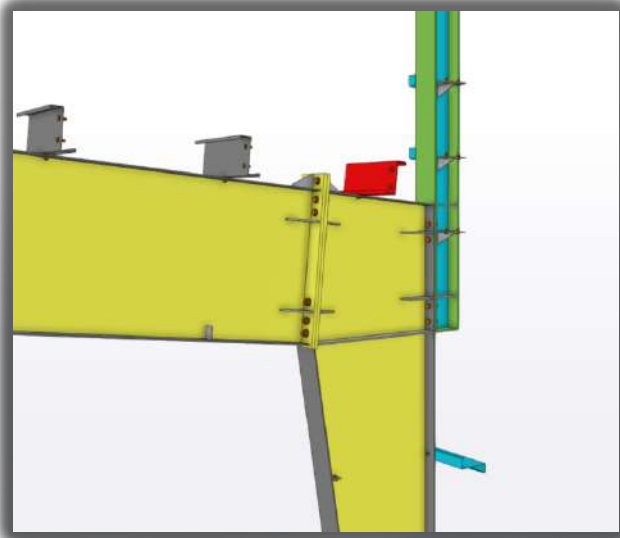
MAX. PRACTICAL WIDTH = 200 m
Multi-Span "2" (MS-2)



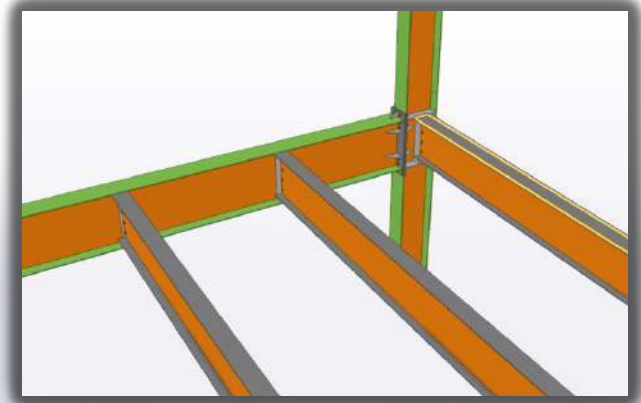
MAX. PRACTICAL WIDTH = 200 m
Multi-Gable (MG)



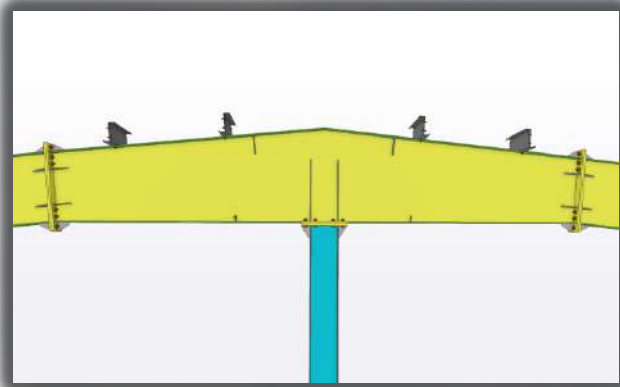
MAX. PRACTICAL WIDTH = 50 m
Roof System (RS)



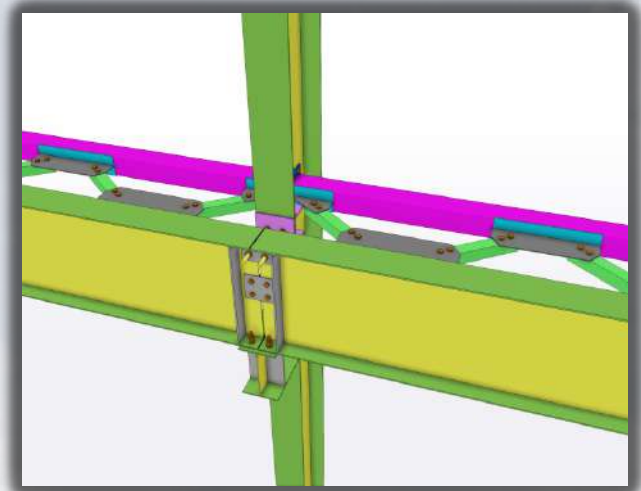
FACASIA DETAIL



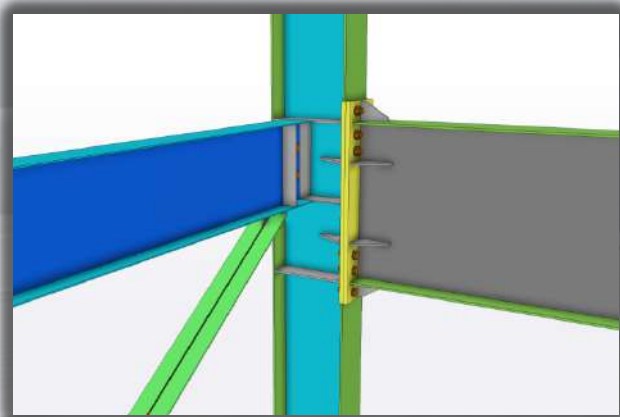
MEZZANINE BEAM & JOIST



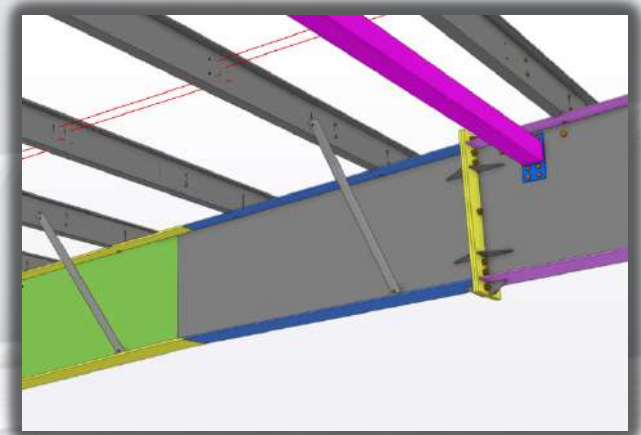
COLUMN & RAFTER



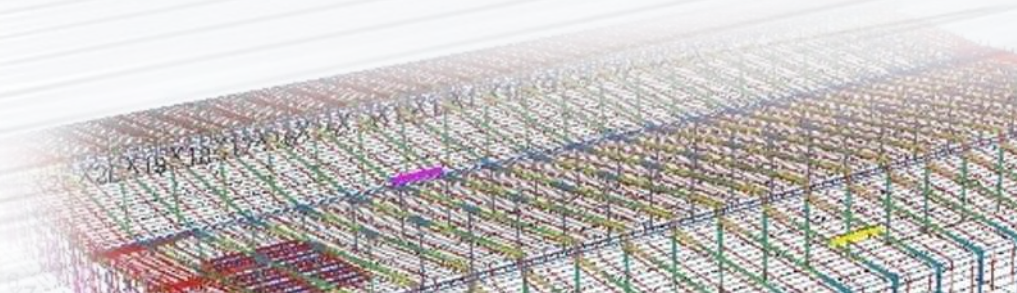
CRANE BEAM



BEAM & COLUMN



FLANGE STAY





- The experienced engineer team
- The Fastest and most optimal advice and design
- Apply the latest international design code
- Using the most popular and professional softwares



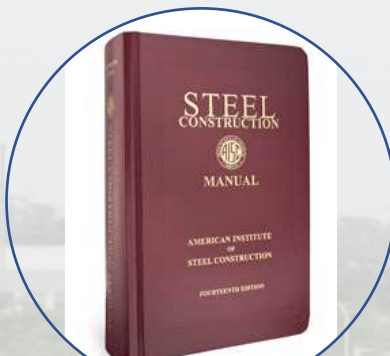
**IBC 2015
Building Code**



MBMA 2012



**AWS 2015
Welding Code**



**AISC 2016
Design Code**



**AISI 2013
Cold Formed**





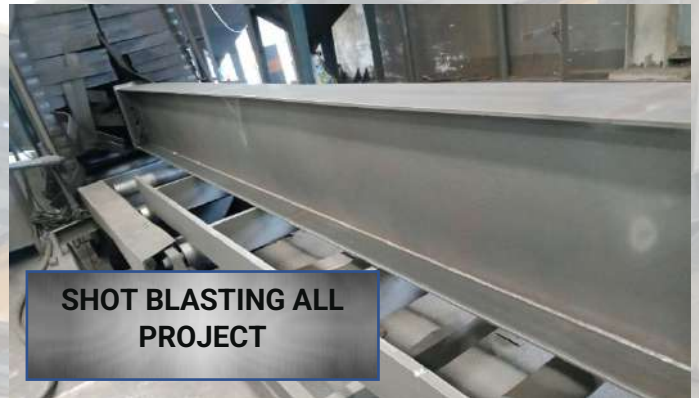
HIGH QUALITY MATERIAL



BEST QUALITY CONTROL



AUTOMATIC FITTING



SHOT BLASTING ALL PROJECT



AUTOMATIC WELDING



TOP CLASS PAINT



QUALIFIED WELDING PROCEDURE



FASTEST DELIVERY



SAFETY TRAINING



TIGHTENING CHECKING



DAILY TOOLBOX MEETING



FULL SAFETY NET



SAFETY LINE



FULL SAFETY NET

ANCHOR BOLT & CONNECTION BOLT



ANCHOR BOLT

- Anchor bolt : SS400 (or equivalent)
- $F_u = 40 \text{ kN/cm}^2$
- Galvanized anchor bolts
- Standard 3 Nut and 1 washer



HIGH STRENGTH BOLTS -Galvanized

Apply for Primary structure

DIN 933 – GRADE 8.8

$F_t = 30.3 \text{ kN/cm}^2$ – $F_u = 72 \text{ to } 83 \text{ kN/cm}^2$

MACHINE BOLTS -Galvanized

Apply for Secondary structure

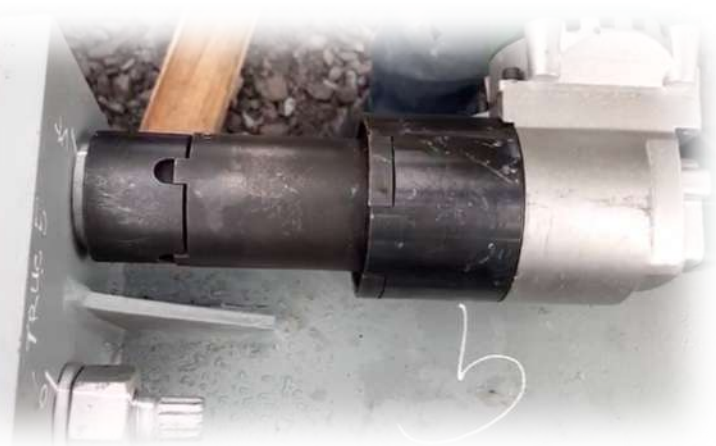
DIN 933 – GRADE 4.6

$F_t = 13.8 \text{ kN/cm}^2$ – $F_u = 41 \text{ kN/cm}^2$

S10T BOLT - for Primary structure

GRADE S10T

$F_t = 30.3 \text{ kN/cm}^2$ – $F_u = 72 \text{ to } 83 \text{ kN/cm}^2$



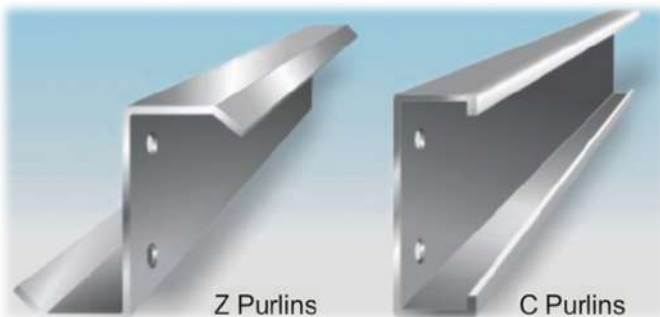
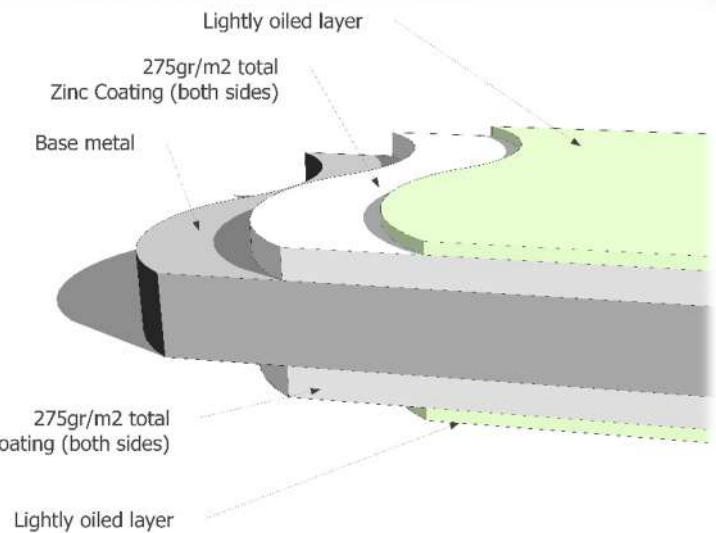


HIGH QUALITY MATERIAL

SSB Zed & Cee sections are roll-formed from hot-dipped Zinc-coated high strength strip comply with ASTM-A653, G450 Z275 (450 Mpa minimum yield strength, 275g/m² minimum zinc coating mass).

This coating allows the product to be able to anti-oxidation under the impact of environment and Temperature and provide a long life for enclose buildings and open- sided rural buildings in a non-aggressive environment.

Original coil materials come from trustable source by suppliers such as PhuongNam, NamKim, Dong A, Yeiphui ...



OUTSTANDING ADVANCES

Wide Spanning Ability

SSB Z & C are made from Zinc-coated high tensile steel 450Mpa permits wide spanning ability while ensuring acceptable deflection.

Simple and Low-Cost Fixing

Cut to Length and hole pre-punched **SSB purlin** can be lowered easily and exactly. High tensile galvanized steel brings light weight roof, helps save cost of the foundation.

Low Maintenance Cost

SSB Z & C are manufactured from galvanized steel which have a high corrosion resistance, gives a low maintenance cost and long last beauty





PROPERTIES

SSB Zed Sections

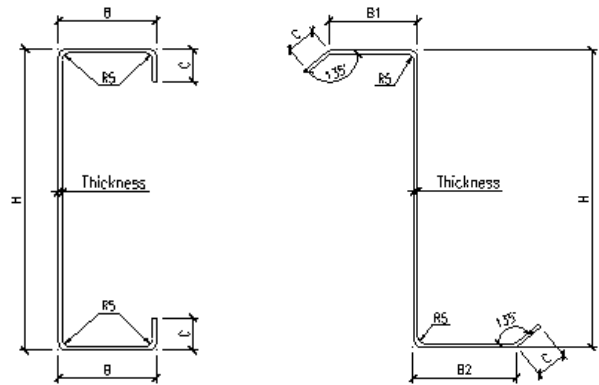
SSB Zed Section feature one board and one narrow flange size fit together snugly, making them suitable for lapping.

Continuous length of purlin result in better economy, but lapping provides two thicknesses of metal over interior supports. Lapping increases, the strength of the sections where bending moments and shear are maximum, thus improving the load capacity and rigidity of the system.

SSB Zed Sections may be use over simple spans. For shorter spans they may be used continuously over two or more span without laps – thus producing reduced deflection compared with simple span – but it does not give the strength of a fully lapped system.

SSB Cee Sections

SSB Cee Section have equal flanges and are suitable for simply supported span. For shorter spans they may be used continuously over two or more spans with the end butted, thus producing reduced deflection compared with simple spans. Cee purlins cannot be used laps.



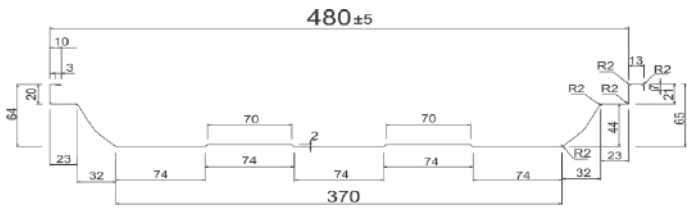
Dimensions of Zeds & Cees

Catalogue Number	t mm	H mm	Mass per unit length Kg/m	Zeds			Cees	
				B1 mm	B2 mm	C mm	B mm	C mm
150Z/C1.5	1.5	150	3.30	55	50	18.0	55	18.0
150Z/C1.9	1.9	150	4.19	66	60	20.0	65	20.0
200Z/C1.5	1.5	200	4.19	66	60	20.0	65	20.0
200Z/C1.9	1.9	200	5.30	66	60	20.0	65	20.0
200Z/C2.4	2.4	200	6.69	66	60	20.0	65	20.0
250Z/C1.9	1.9	250	6.49	82	75	20.0	80	20.0
250Z/C2.4	2.4	250	8.30	82	75	20.0	80	20.0

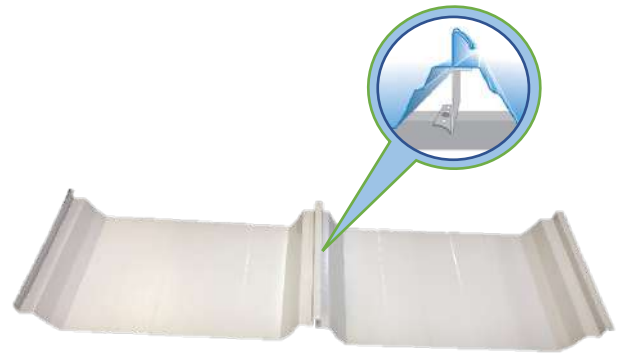
Stable Steel Building can produce C&Z non-standard dimensions to meet project requirement



• StableSEAM 65



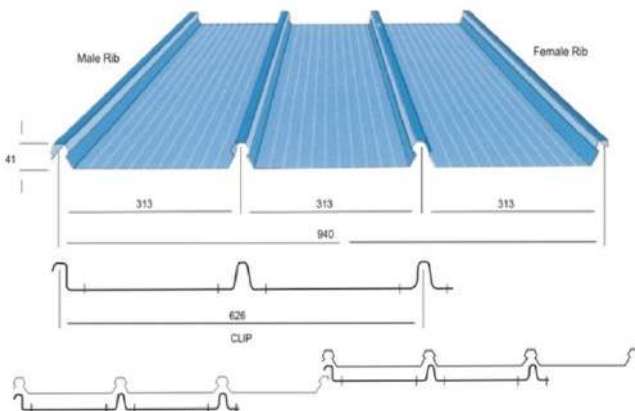
- *Withstanding strong Wind Uplift*
- *Totally Leaking prevention*
- *Cut to Length – No End laps*



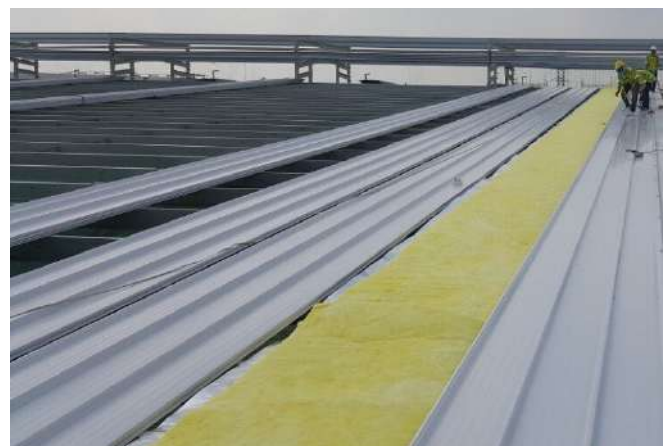
- *Perfect appearance and modernity*
- *Roof slope up to 3%*



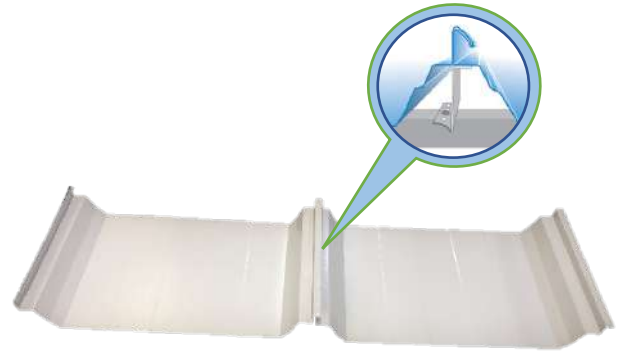
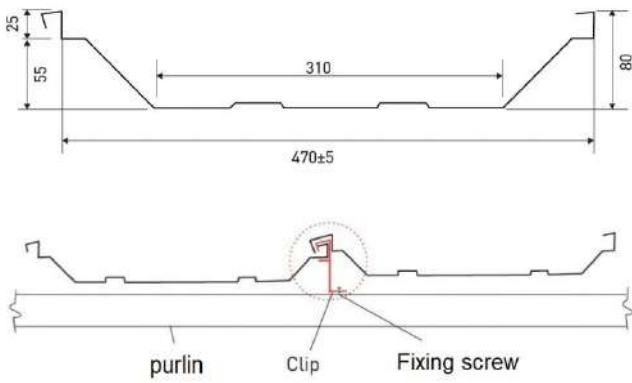
• StableLOK



- *Good leaking prevention*
- *Modernity*
- *Cut to Length – No End laps*



• StableSEAM 80



- Withstanding strong Wind Uplift
- Totally Leaking prevention
- Cut to Length – No End laps

- Perfect appearance and modernity
- Roof slope up can 3%



THÔNG SỐ KỸ THUẬT / TECHNIQUE PARAMETER

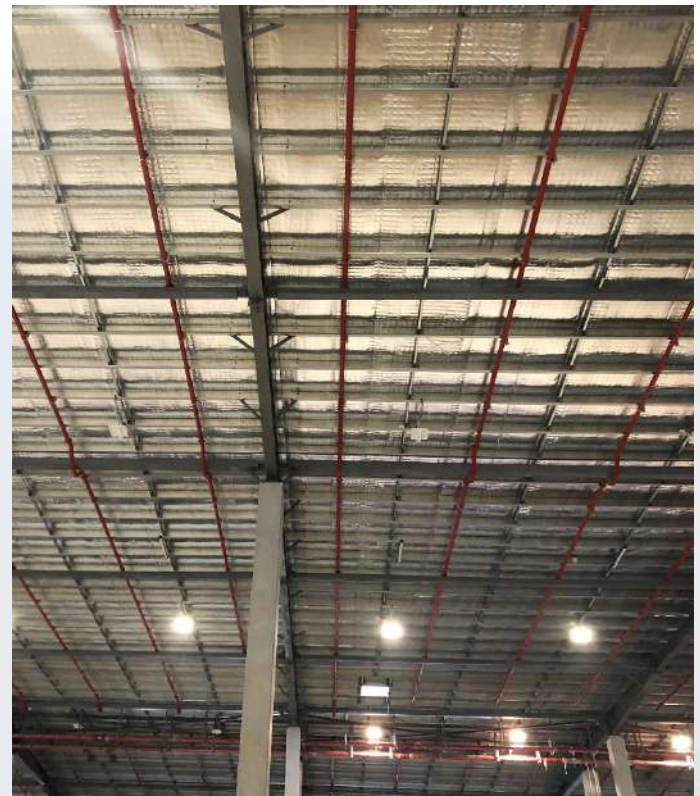
Khổ hữu dụng(mm)/ Effective width				470±5	Ứng dụng/ Application
Khổ nguyên liệu(mm)/ Feeding width				595	
Cường độ(MPa)/ Yieh Strength				G300-450MPa	Lop mái Roof
Chiều cao sóng(mm)/ Rib height				80	
Độ dày(mm)/ Thickness	0.45	0.48	0.50	0.55	

• Insulation

• ROCKWOOL & GLASSWOOL



Specification	Rockwool	Glasswool
Density (kg/m ³)	50,80,100,120,150	12, 24,32,40,64
Thickness(mm)	30,50,80,100	25,30,50
Length(mm)	1,200	30,000
Width (mm)	600	1,200
Inner diameter range (mm)	600	
Fireproof	Grade A	Grade A
Demp - roof	95%	98.5%
Applied temperature range	240°C – 650°C	240°C-350°C

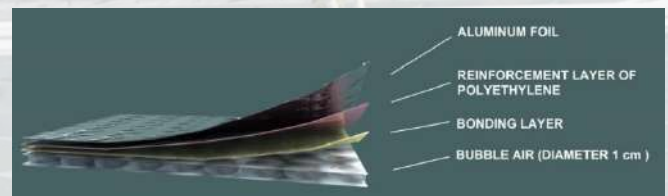


• AIR BUBBLE



Roll size (m)	1.55 x 40
Thickness (mm)	3, 4, 8

Single aluminium facing



Double aluminium facing





STAIRCASE



TEMPERED GLASS ON ROOF



SPIRAL STAIRCASE



GLASSWOOL INSULATION



HORIZONTAL FASCIA



CANOPY LINER



PURLIN BRACING - SAG ANGLE



FIRE PROOFING PAINT



PURLIN BRACING – CEE CHANEL



DECKING



WALL LIGHT PANEL



DOUBLE SKIN ROOF



ROD BRACING



CANOPY



RIDGE VENT



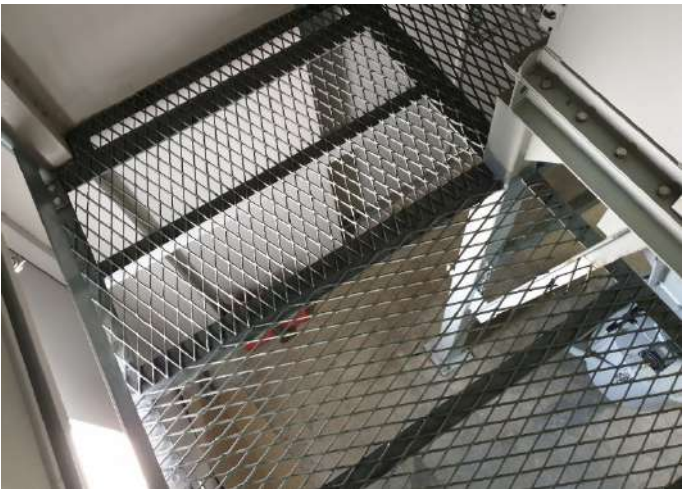
STEEL LOUVER



JACK-BEAM



SAFETY LINE



EXPANDED METAL



HANGING STAIRCASE



CAGE LADDER



PLATFORM ON ROOF





PROJECT : ZIGUI JISHENG (VIETNAM) WANGSHENG TEXTILES Project

LOCATION : VSIP QUANG NGAI – VIETNAM

AREA : 25,000m²



PROJECT : PEPSI FOOD BINH DUONG EXTENSION -BINH DUONG – VIETNAM

AREA : 3,500m²



PROJECT : AQUA VIETNAM NEW FACTORY - BIEN HOA II – VIETNAM

AREA : 5,000m²



PROJECT : MENSA INDUSTRIES QUANG NGAI-VSIP QUANG NGAI – VIETNAM

AREA : 27,000m2 (PHASE 1 & 2)



PROJECT : NSG GLASS FACTORY – MY XUAN A IZ – VUNG TAU – VIETNAM

AREA : 10,000m²



PROJECT : SCK WOOD & INTERIOR MANUFACTORY – LONG AN - VIETNAM

AREA : 5,000m²



PROJECT : AMERICAN & EFIRD VIETNAM THREAD PLANT

LOCATION : NHON TRACH IZ – DONG NAI – VIETNAM

AREA : 12,000m²



PROJECT : FM LOGISTIC BAC NINH – VSIP BAC NINH – VIETNAM

AREA : 27,000m2



PROJECT : IML CONTAINER VIETNAM PHASE 2 – LONGAN – VIETNAM

AREA : 7,000M2



PROJECT : MAPLE TREE PHASE 4 – VSIP II – BINH DUONG

AREA : 15,000M2



PROJECT : PEPPERL + FUCHS - TAN THUAN – DIST .7 HCMC

AREA : 5,000M2



Nestle Tri an Project - Mr Freezer

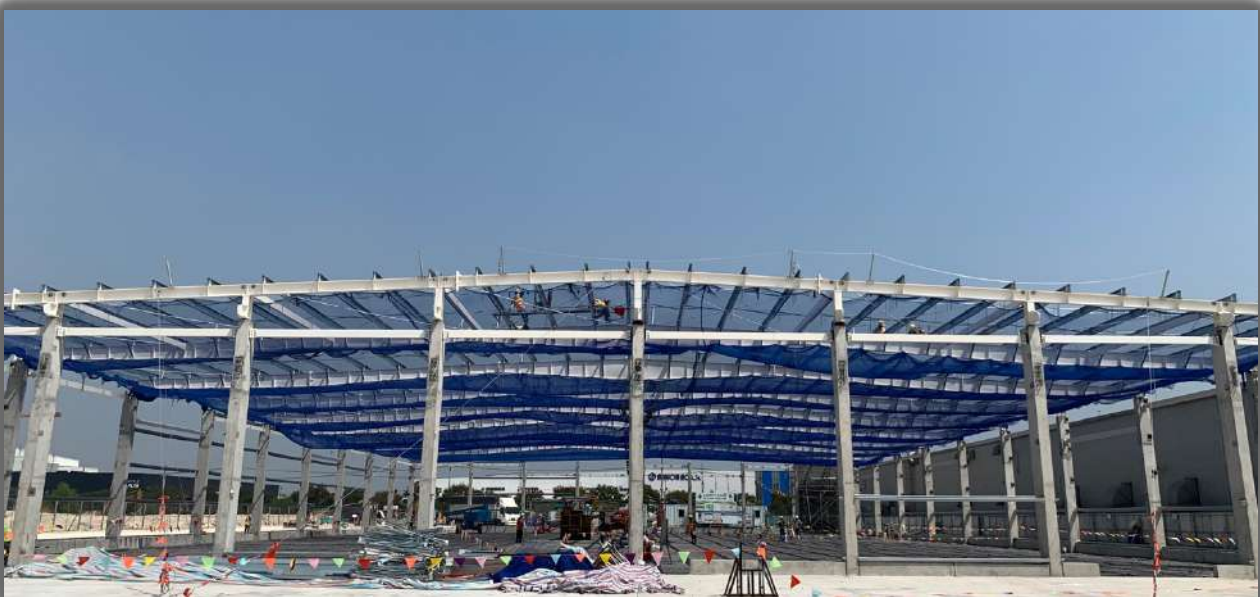
CONSULTANT(S): SEAS PROJECT CONSULTANT

Location: Amata IZ, Long Binh, Dong Nai VietNam



Design and built for LD-WSE New Project

Location : Long Duc IZ - Dong Nai province – Vietnam



Design and built for TOMBOW MANUFACTURING ASIA

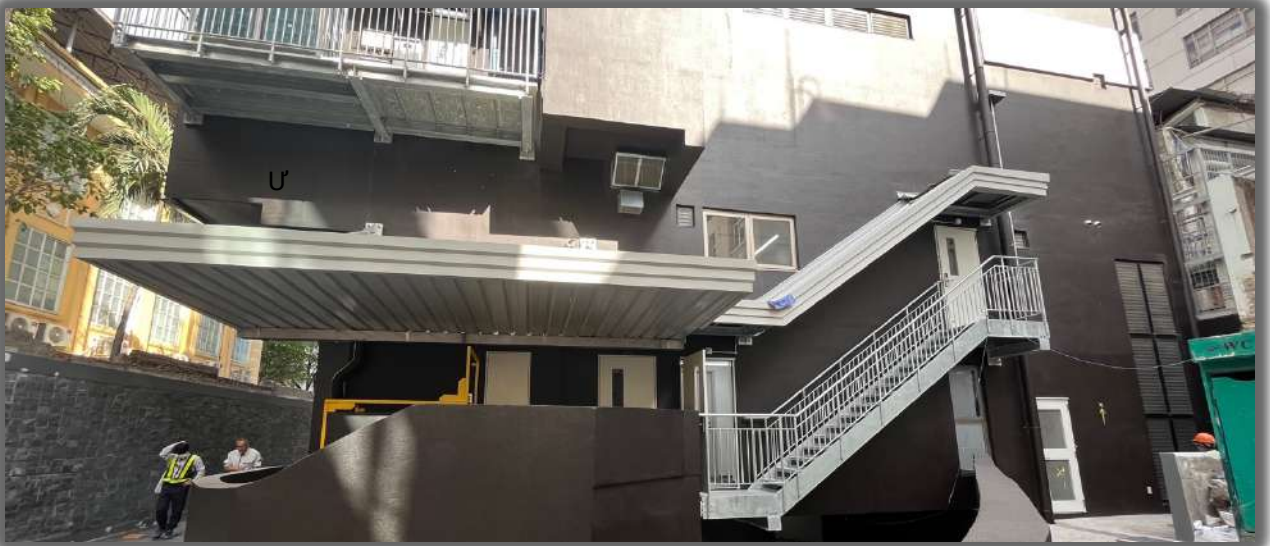
NEW WAREHOUSE (JAPAN)

Location : AMATA IZ - Dong Nai province – Vietnam -



Project name : WESTLAKE COMPOUNDS VIETNAM FACTORY

Location : BIEN HOA II – Dong Nai Province - Viet nam



Project name : SOTETSU GRAND PRESA SAIGON

Location : Dist.1 – Ho Chi Minh City



Project name : GCP CEMENT & CONCRETE FACTORY

Location : DONG NAM IP, CU CHI DISTRICT, HCMC, VIETNAM



STABLE STEEL BUILDING COMPANY LIMITED